

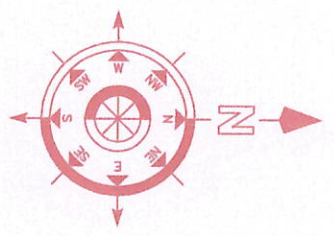
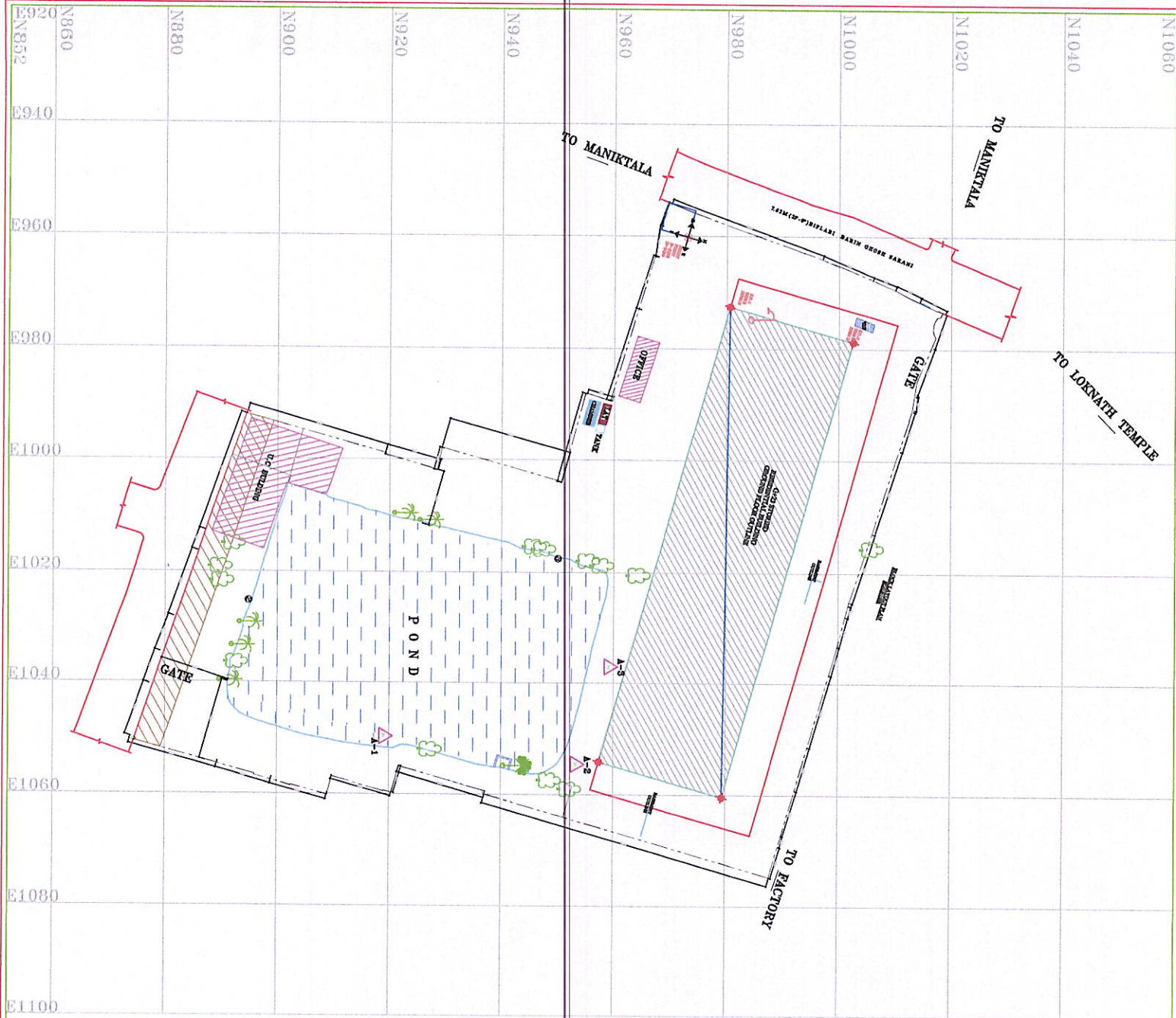


The location details of the project with demarcation of land dedicated for the project along with boundaries including latitude and longitude of the end points of the project.

The followings are attached herewith:

- i. The plan showing the location details of the project.
- ii. The plan showing the demarcation of the land dedicated for the project along with its boundaries.
- iii. The latitude is 22.5868 and the longitude is N,88.3815E of the end points of the project.

For Swastik Projects Pvt. Ltd.
K.C. Khurawat
Director



LATITUDE AND LONGITUDE ARE 22.5868° N, 88.3815° E

- NOTES:-**
1. ALL DIMENSIONS ARE IN MM
 2. TOTAL AREA OF THE PLOT=9474 SQ.M.= 1019761.136 SQ.FT.=7 BIGHA 1 KATHA 10 CHAVAK 20 SQ.FT.

For Swastik Projects Pvt. Ltd.
K.C. Karmawal
 Director

AGENCY:-		S. S. P. E	
CLIENTS:-		S/O. M. S. P. E. ROT SAKANI P.O. MANGALURU (MANGALURU) HOOGHLY (W.D.), PIN- 712500	
SHAHI	TITLE:-	REPAIRS PROGRAMMICAL PIPILARI WORK AT 44A/1 B.S. CHENI BAHANI, 501-54	
DESIGNED BY	DATE	SCALE	SHEET 1 OF 1
CHENI B. CHAVI	51.06.23	1:500	REV
REVISY BY			
A-2			